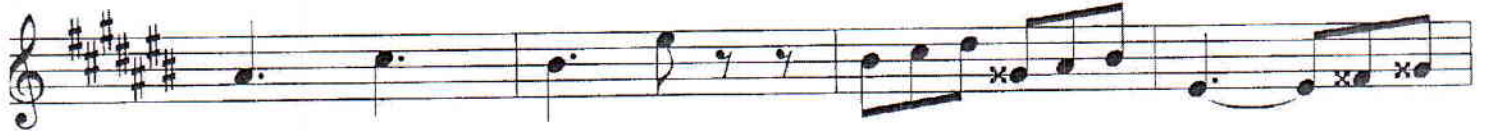


# VI (манџени)

Concine  
(Tema, op. 9)



2

### Allegro

G.P. Telemann

Musical score for G.P. Telemann's Allegro, measures 1-16. The score is written in treble clef, 3/4 time, and B-flat major. It consists of four staves. The first staff begins with a *mf* dynamic and a *f* dynamic. The second staff begins with a *f* dynamic. The third staff begins with a *mf* dynamic. The fourth staff contains two first endings, labeled 1. and 2., with a handwritten *rit.* above the second ending. The piece concludes with a double bar line.

3

### Gavotta iz 6. suite za violinu

J.S. Bach

Musical score for J.S. Bach's Gavotta iz 6. suite za violinu, measures 1-16. The score is written in treble clef, 4/4 time, and D major. It consists of four staves. The first staff begins with a *fp* dynamic, followed by *mp* and *mf*. The second staff begins with a *p* dynamic and ends with a *cresc.* marking. The third staff begins with a *fp* dynamic, followed by *mp* and *mf*. The fourth staff begins with a *p* dynamic and ends with a double bar line.

4

S.Moniuszko

Musical score for exercise 4 by S. Moniuszko. The score is written on three staves in treble clef, with a key signature of two sharps (F# and C#) and a 6/8 time signature. The first staff begins with a *mf* dynamic and includes a fermata over a dotted quarter note. The second staff features a *f* dynamic followed by a *mf* dynamic. The third staff concludes with a *f* dynamic and a double bar line.

### Svibanjska pjesma

5

L.V.Beethoven

Musical score for exercise 5 by L.V. Beethoven, titled "Svibanjska pjesma". The score is written on four staves in treble clef, with a key signature of three flats (Bb, Eb, Ab) and a 2/4 time signature. The first staff starts with a *mp* dynamic and ends with a *mf* dynamic. The second and third staves continue the melodic line. The fourth staff concludes with a double bar line.

# Arija

6

Largo

W. Boyce

The musical score for 'Arija' by William Boyce is written in bass clef with a 3/4 time signature. The key signature consists of three flats (B-flat, E-flat, A-flat). The piece begins with a forte (*f*) dynamic and a 'Largo' tempo. The first line of music features a series of eighth and quarter notes. The second line starts with a piano (*p*) dynamic and includes a dotted quarter note. The third line continues with eighth notes and a quarter note. The fourth line features a half note with a slur and a forte (*f*) dynamic. The fifth line begins with a piano (*p*) dynamic and includes a quarter rest. The sixth line contains a triplet of eighth notes. The seventh line also features a triplet of eighth notes. The eighth line concludes with a double bar line and a key signature change to two flats (B-flat, E-flat). The final line of the score ends with a quarter note and a fermata.





Usmeni ispit iz solfeggia (teorija) po razredima  
(Osnovna glazbena škola)

*I razred: slušano prepoznavanje intervala od c1 do c2  
(imenovanje solmizacijom, abecedom ili intervalskim imenom)*

*II razred: slušno prepoznavanje velike i male sekunde i  
terce, te gradnja istoimenih na zadanoj noti*

*III razred: slušno prepoznavanje intervala do oktave  
(kvalitativno i kvantitativno), te gradnja na  
zadanoj noti*

*IV razred: slušno prepoznavanje kvintakorda (dur, mol,  
povećani i smanjeni), te gradnja na zadanoj  
noti*

*V razred: slušno prepoznavanje obrata kvintakorda  
(dur i mol), te gradnja na zadanoj noti*

*VI razred: test iz teorije (svih 6 godina), te D7 i obrati  
(slušno i teoretski).*